



22. Presentation mode



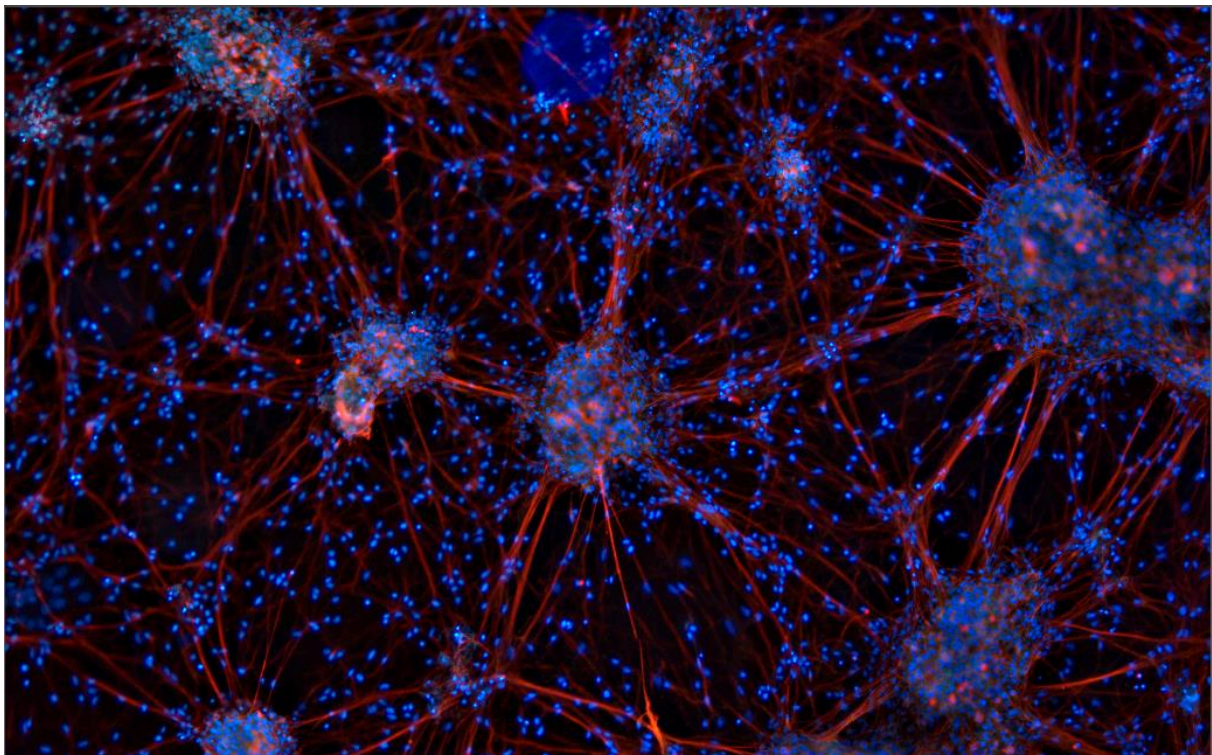
Presentation mode of JENOPTIK GRYPHAX[®] software

The “[Presentation mode](#)” of JENOPTIK GRYPHAX software enables user to display the live image stream or recorded items from Gallery on whole screen to see all details of images.

General description:

The *Presentation mode* is part of the JENOPTIK GRYPHAX software. It enables user to change from standard software view to full screen mode to display the live image stream or recorded items on whole screen. All software tools will be still active at the background but not visible.

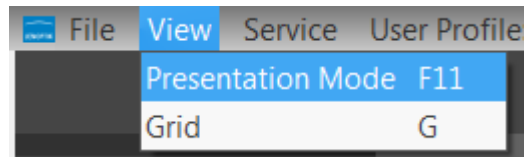
Presentation mode activated:





22.1 Start Presentation mode:

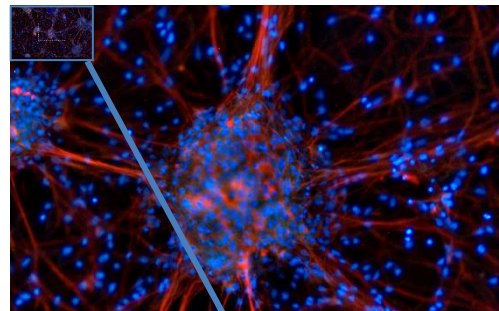
To **start** the *Presentation mode* use the keyboard key (**F11**) or start by using the Title bar menu from software ...View / Presentation Mode.



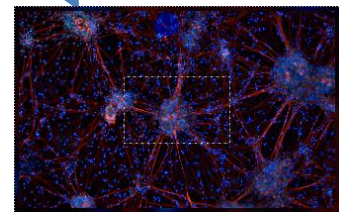
Note: This submenu is enabled if any meaningful image/video is shown in the image window.

Change zoom factor:

To **change** the zoom factor at *Presentation mode* between "1:1" view and scaled "Fit To Screen" view use the keyboard key (**Z**). The Default view at JENOPTIK GRYPHAX software is "Fit To Screen" view. At "1:1" view the image will be display one pixel of the camera/ image as one pixel on the screen.



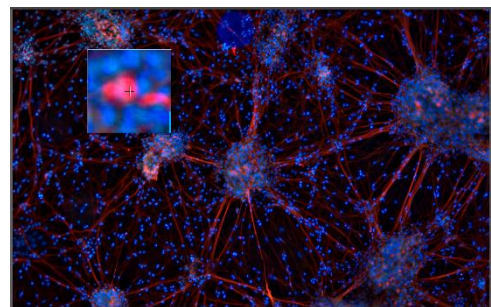
Additionally, a small overview window will be displayed over the image at "1:1" view. The currently displayed part of image is marked as rectangle. The position (ROI) can be moved by mouse operation. In addition, size and position of overview window can be changed by mouse operation.



Activate magnifier:

To **activate** the *Magnifier tool*  during *Presentation mode* use the keyboard key (**Space bar**). Hold the space bar and a small floating pane is opened as image window overlay and shows a view of a selected sector as long as the key is pressed.

Zoom level is depending on the used section of "zoom level" under Preferences / General / Magnifier



Record images:

To **record** images during *Presentation mode* you can use the keyboard key (**Enter**) or (**F2**). All images will be recorded to previously selected destination folder and can be previewed at software Gallery.

Leave Presentation mode:

To **leave** the *Presentation mode* use the keyboard key (**F11**) or (**ESC**). Software will change back to the standard software view with all last opened tools as before.